

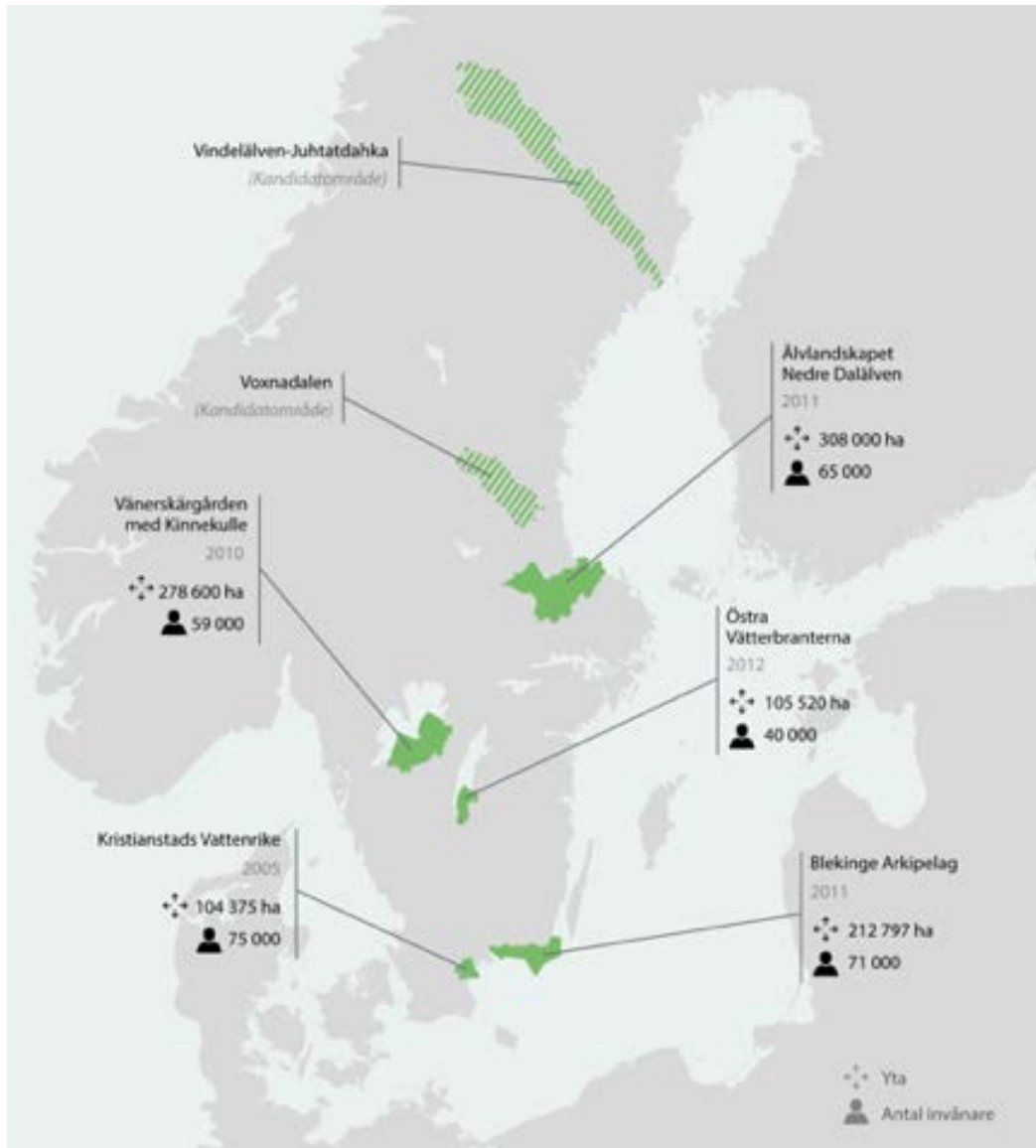
# Biosphere reserves – model regions for sustainable development

Johanna MacTaggart

National MAB Coordinator  
Sweden

Päijänne seminar  
3.10.2018

# Biosphere reserves – model regions for sustainable development



- New global MAB strategy (2015-2025): BRs are useful as tools for implementing 2030 Agenda
- More than 10 years experience of sustainable development in a practical and local context
- Broad collaboration, learning and holistic approach
- Local solutions to global challenges (SDGs)



# BR Kristianstads Vattenrike: Cranes



- Bridging between stakeholders, create trade-offs between environmental, social, and economic benefits. (win-win-win)
- BR can support platforms for mutual and collective learning, enabling synergies between SDGs
- BR organisation functions as a neutral, independent platform for collaboration and conflict resolution, enabling integrated work with SDGs
- Increase social capital and build trust

# BR Lake Vänern Archipelago: process of co-creation



- Involving a broad range of stakeholders in finding solutions increases long-term commitment
- Serves as incubator, well positioned to inspire systematic change
- Support human well-being while securing ecosystem services for the future

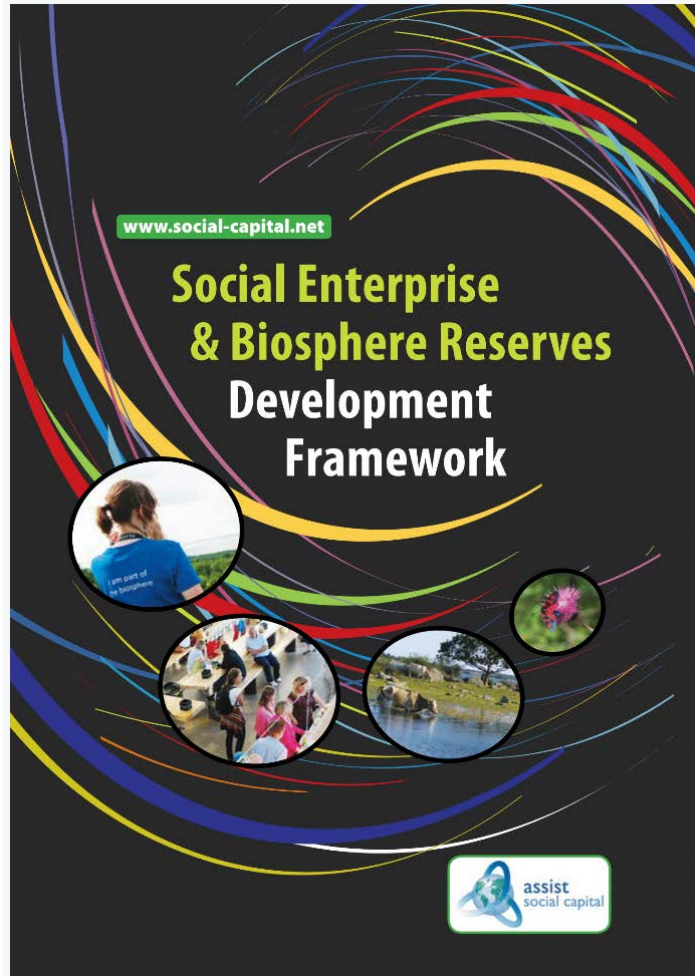


# Business development for tourism entrepreneurs with eco-ambitions



- Course in ecotourism entrepreneurship
- Individual assistance with market analysis
- Inspirational network with other eco-entrepreneurs
- Stronger hostmanship – stronger destination
- Quality ensurance of products
- Increased profitability

# Social Entrepreneurship in Biosphere Reserves



- Social entrepreneurs are individuals who adopt a business-like approach to respond to social and environmental challenges.
- Biosphere Reserves allow businesses that invest in people and the environment to thrive, creating flourishing and robust communities.
- Any organization, SDG business or social enterprise which invests surplus to achieve positive social or environmental impacts are important.

<https://www.oasiis-br.org>



Fördjupning Affärsmöjligheter Resurser

Insights



## To conclude:

1. Tourism, landowners, land/resource users
2. Win-win situations
3. No labeling but collaborations
4. Social entrepreneurs are drivers for sustainable development
5. BRs incubate actions for SDG







Thank you!